



Cathy Riley

Project Manager

Division of Information Technology

University of Wisconsin-Madison

University of Wisconsin-Madison

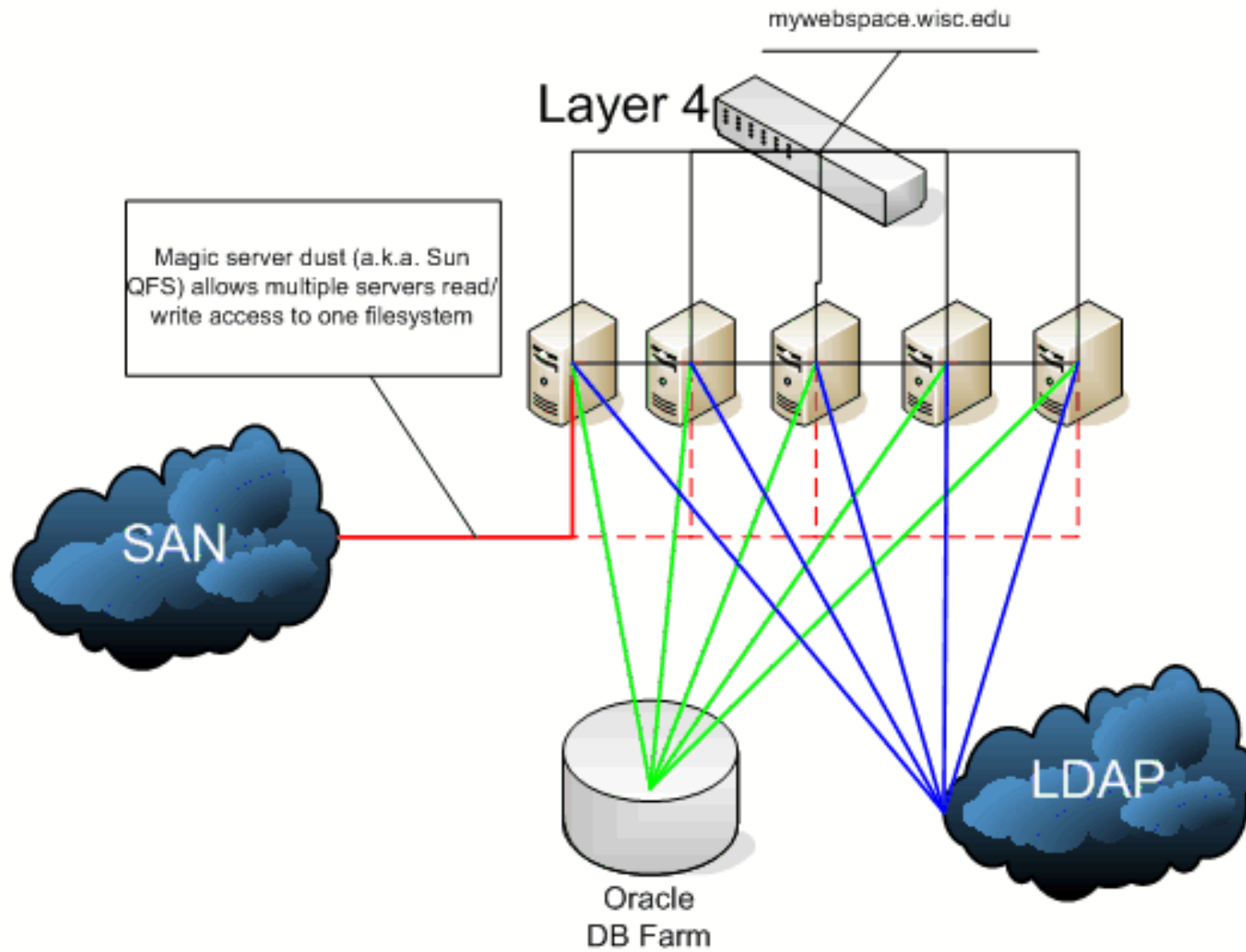


Deployment - Pilot

- ***6 Month time frame***
- ***400 Pilot Users***
- ***Functionality Testing***
- ***Load Testing***

Deployment – System Configuration

- *Layer 4 Switch*
- *5 Application Servers*
- *1 WebServices Application Server*
- *Sun's QFS*
- *SAN Storage*
- *Oracle DB*
- *University Directory*



Deployment – User Documentation

- ***Help Desk Documentation***
- ***DoIT WebSite***
- ***On-line Help Screens***
- ***User Manual***
- ***Group Directory Admin Manual***

Deployment – NetID Mastering

- *NetID Activation*
- *Unique MyWebSpaceID*
- *MyWebSpaceID stored in LDAP*
- *NetID Deactivation*

Deployment - Training

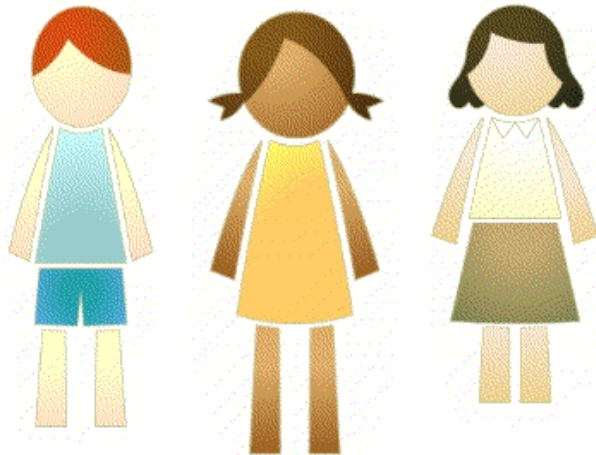
- ***Brownbag***
 - General and Department/Project
- ***One on Several***
- ***On-line***
 - Currently in Development

Basics

Collaboration

Advanced

"These are all the things you
can do with MyWebSpace"



Lesson 1: Web access

[See How](#)

[You Try It](#)

Lesson 2: Working with Files

[See How](#)

[You Try It](#)

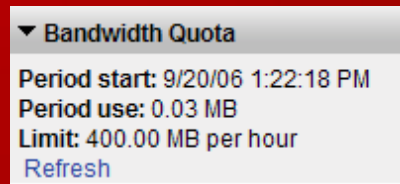
Lesson 3: Using WebDAV

[See How](#)

[You Try It](#)

Deployment – User Experience

- ***Automatic Account Creation***
 - Private and Web Folders
 - 200MB Storage, 400MB Bandwidth
- ***Bandwidth Quota Monitor***



▼ Bandwidth Quota
Period start: 9/20/06 1:22:18 PM
Period use: 0.03 MB
Limit: 400.00 MB per hour
[Refresh](#)

- ***Group Directories Link***



Deployment – Team Resources

- ***Team WIKI***
- ***JIRA for issue tracking***
- ***CVS Repository***
- ***Eclipse for change tracking***
- ***Statistics (analog and awstats)***

Special Features – Quota Increases



- ***WebServices application***
- ***Automated increase to both storage and bandwidth***
- ***\$10 per 100MB increments for storage, 200MB for bandwidth***
- ***Purchases through on-line DoIT TechStore***

Special Features – Group Directories



- ***Automated Creation Process – TechStore***
 - 300MB Storage, 1GB/hour Bandwidth
- ***Administrators***
 - Primary and Backup
- ***Bookmarks***
- ***Resources***
- ***Uses***
 - Courses
 - Cross Campus Work Groups
 - Project Teams



Special Features – Single Signon

- ***WebISO***
 - Pubcookie
- ***Portal View***
 - WiscMail
 - WiscCal
 - My WebSpace



Single Sign On

MY UW WISMAIL SEARCH PEOPLE

 **WISCONSIN**
UNIVERSITY OF WISCONSIN-MADISON

[Activate my NetID](#) [Modify my NetID](#)

NetID Login

Prior to using **My WebSpace**, you must login with your NetID.

LOGIN

NetID

[What is my NetID? \(ie. bbadger\)](#)

Password

[Forgot your password?](#)

Login

Prevent unauthorized use of your personal information. Close **all** web browser windows when you are finished (quit on a Mac). Logging into your NetID authorizes you for all other online services that use the NetID Login service.



My Web SPACE

8/11 [NetID login process has changed](#)

8/2 [Single Login for My WebSpace](#)

[More My WebSpace news](#)

[Appropriate Use](#)
[Group Directories](#)
[FAQ](#)
[Highlighted Features](#)
[User Manual](#)
[Xyθος Client Manual](#)

[What is this site?](#) [Security Best Practices](#) [Information for Web Developers](#)

Portal View



[UW HOME](#) [UW SEARCH](#) [PEOPLE](#)

[Home](#) [Academics](#) [Services](#) [Work Record](#) [My Page](#)

[WiscMail](#) [WiscCal](#) [My WebSpace](#) [My Bookmarks](#)

[Help](#) | [Feedback](#) | [My NetID](#) | [Log out](#) |
Logged in as: **CATHERINE D RILEY**

WiscMail

Enter »

Inbox 1850 0 0

Mark Blahnik survey

Phil Jochims New stuff to do :)

Jan Cheethar Reminder: Campus Poc

Nicholas Blai Re: [Fwd: quarantine re

Nicholas Blai [Fwd: quarantine repor

Quota

WiscCal

Enter »

09:46 AM 09/27/2006

09:00 AM - 09:30 AM

Roger/Cathy Status

10:30 AM - 12:00 PM

Campus Podcasting Discussion

02:00 PM - 03:00 PM

Out of the Office

My WebSpace

Enter » | [Sharing Options](#)

Bookmarks:

Disk Quota: 1190.04 MB / 3000.00 MB (40%)

News About My UW

New report feature available to Advisors

WiscCal Outage Oct 13 at 5PM to Oct 16 at 8AM

[More »](#)

Campus news

WISCAPE forums planned SEPTEMBER 22

Continuing studies dean to retire next summer SEPTEMBER 22

Conference focuses on first-year students SEPTEMBER 22

New 'gateway' to UW-Madison opens to public SEPTEMBER 22

Professor introduces unusual edible fungus to Madison SEPTEMBER 21

World Dance Celebration explores global ideas SEPTEMBER 21

Constitution Day 2006 SEPTEMBER 20

Wendt Library hosts women in engineering exhibit SEPTEMBER 19

[More »](#)

Upcoming Campus Events

SEPTEMBER 27

2 p.m. Sellery Hall Blood Drive

6 p.m. World Peace Day Celebration

6 p.m. Association of Information Systems

Content loaded on this page:

- ▶ [WiscMail](#)
- ▶ [WiscCal](#)
- ▶ [My WebSpace](#)
- ▶ [DoIT Help Desk notices](#)
- ▶ [UW Badger Headlines](#)
- ▶ [Changes in My UW-Madison](#)
- ▶ [News About My UW](#)
- ▶ [Campus news](#)
- ▶ [Upcoming Campus Events](#)
- ▶ [Find it Fast](#)
- ▶ [My Bookmarks](#)
- ▶ [Campus Quick Links](#)
- ▶ [Weather](#)

Customize this page:

Add / remove content

Rearrange layout

Find it Fast

LOST?
Find what you need
in the new My UW



My Bookmarks

Special Features – My WebSpace Commons



- ***User Community for searching and tagging public content***
- ***Member Registration***
- ***List and Tag Sites***
- ***Search the Community***



Commons Registration

My WebSpace Commons

[Home](#) [Register](#) [Deregister](#) [List Site](#) [Delete Site](#) [Search](#) [About](#) [Privacy Information](#)

You are logged in as **criley**, however you must [Register](#) in order to use all features.

My WebSpace Commons Registration

The My WebSpace Commons application is an opt-in listing of public content within the My WebSpace service. Eligibility for My WebSpace is a requirement for registration.

Upon submission of this form, you agree to the following **Terms of Service**:

- The [My WebSpace Terms of Service](#) apply to the My WebSpace Commons as well.
- You can only list sites With My WebSpace Commons under your own NetID.
- Any site you list must abide by the [University of Wisconsin-Madison Guidelines for Appropriate Use of Information Technology Resources](#).
- **You are responsible for the content within your site.**
- **If the University receives a credible report that a violation has occurred, or if, in the course of managing the service, discovers evidence of a violation, then the matter will be referred for investigation, University disciplinary action, and/or criminal prosecution.**

By clicking "I Accept the Terms of Service" below, you agree to all of the Terms of Service above and understand the [Privacy Information](#).

This registration form will record your user id, the current date, and your current IP address for the purpose of properly identifying users during the registration process. This information will never be shared.

I Accept the Terms of Service



Commons Listing



My WebSpace Commons

[Home](#) [Register](#) [Deregister](#) [List Site](#) [Delist Site](#) [Search](#) [About](#) [Privacy Information](#)

You are logged in as **criley**, however you must [Register](#) in order to use all features.

Sites listed by *mablasinski*

- [Badgers in Hawaii 2005](#)
Date Listed: 12:56 PM 08/22/2006 CST
Description: Pictures of my trip to Hawaii in November 2005 to watch the Wisconsin Badgers trample the Hawaii Warriors in Barry Alvarez's last regular season game as head coach.
Tags: [2005](#) (1 times), [badgers](#) (1 times), [football](#) (1 times), [hawaii](#) (1 times), [travel](#) (1 times)
- [Badgers vs Iowa 2005](#)
Date Listed: 01:02 PM 08/22/2006 CST
Description: Barry Alvarez's last home game as head coach of the 2005 Wisconsin Badgers. We lost the game, but the pre-party and post-game ceremonies for Barry Alvarez made this an amazing time nonetheless.
Tags: [2005](#) (1 times), [alvarez](#) (1 times), [badgers](#) (1 times), [football](#) (1 times), [iowa](#) (1 times)
- [Citrus Bowl 2006](#)
Date Listed: 12:47 PM 08/22/2006 CST
Description: My pictures from the 2006 Capital One (Citrus) Bowl where the Wisconsin Badgers beat the Auburn Tigers.
Tags: [2006](#) (1 times), [badgers](#) (1 times), [bowl](#) (1 times), [capital](#) (1 times), [citrus](#) (1 times), [football](#) (1 times), [one](#) (1 times), [pictures](#) (1 times), [wisconsin](#) (1 times)

[Return to Search](#)

Current Use Examples – File Storage and Sharing



“Our lab is currently using the webspace as a file-sharing and communication tool to share information with researchers and students not only around campus, but also with researchers around the country. We mainly use the webspace to share project information with colleagues and collaborators. We have been very impressed with the ease of use and the file sharing capabilities; especially the ability to manage and control how files are shared and who can access them. The fast upload and download time as well as the data security give us confidence that our data can be shared quickly and safely.” (Reid Durtschi, Waisman Center 9/11/2006)

Current Use Examples – Personal WebSites



Robert Stone Newsom

UW-Madison, Personal Page


[HOME](#) [BIO](#) [PUBS](#) [Profile](#)

Contact Robert:

- [Contact Information](#)

Download documents

- [Resume](#) (2 page pdf)
- [CV](#) (8 page pdf)



Contact Information:

Robert Stone Newsom
Center for Health
Systems Research &
Analysis
(CHSRA)
1148 WARF Building
610 Walnut Street
Madison, Wisconsin
53726 USA

Phone: (608) 263-0764
Email:
mewsom@wisc.edu

Robert Stone Newsom, PhD

Professional Sketch:

- Most effective extracting information from data, and synthesizing knowledge from information
- Extensive public & private sector experience conceptualizing, designing, managing, financing & applying research.
- Cognitive Psychologist, specialist in human learning, measurement & evaluation.
- Deep knowledge & experience in health services data, research & policy

Career Focus:

Primarily interested in: how people learn, remember, think; and why they act as they do. In practice this has led to:

- Translating science & research into policy & evidence-based decision making
- Measuring, evaluating & purchasing value
- Data-based performance measurement & evaluation tools & methods
- Developing predictive modeling concepts and methods

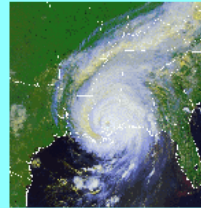
Current engagements:

- Senior Scientist, (50% FTE) with CHSRA
- Consulting, (50%) with Wisconsin Physician Services.
- Voluntary consulting with United Way of



Current Use Examples – URPL

URPL 969 Applied GIS Workshop: Rethinking New Orleans After Hurricane Katrina



Source: [SSEC UW-Madison](#)

[Department of Urban and Regional Planning,](#)
[University of Wisconsin-Madison](#)
Spring 2006 -- 3 credits

David Hart, Coastal GIS Specialist,
[University of Wisconsin Sea Grant Institute,](#)
Email: dhart*at*aqua.wisc.edu
Phone: (608) 262-6515

Lecture - Wednesdays, 1:00 to 2:15 p.m. - 208 Old Music Hall
Lab - Fridays, 1:00 to 2:15 p.m. - URPL Computer Lab

Quick Links

[Course Resources](#)
* [Late Breaking Readings](#) *
[Course Schedule](#)
[Course Products - NEW](#)
** [Group Projects](#) **
** [GIS Application Papers](#) **
[Links](#)
* [Katrina GIS Resources](#) *
* [Rebuilding New Orleans](#) *
[Map of New Orleans](#)


On August 29th, Hurricane Katrina devastated New Orleans and the central Gulf Coast. The storm killed over one thousand people in Louisiana and flooded 80% of the structures in New Orleans. A mandatory evacuation was ordered while governments drained the city, repaired levees, and restored critical infrastructure. The long-term human impacts of the catastrophe will be harder to assess. Local officials fear that many of the nearly half-million city residents may not return. The planning profession has a critical role in rethinking and rebuilding the city and region. The creative thinking of planners working in collaboration with other disciplines from engineering to sociology is needed to shape the future of New Orleans. An opportunity exists to rebuild the city in a sustainable and more socially equitable manner. This workshop allows students to use GIS to offer ideas and recommendations on how to rebuild New Orleans. It provides opportunities to learn about the environmental setting and culture of New Orleans; review the literature on coastal hazards, disaster recovery, and sustainable development; plan and design GIS applications, acquire and integrate spatial data; conduct sophisticated GIS analyses; and communicate ideas in a forum that will help decision-makers as they shape the future of one of America's greatest and beloved cities.

Course Resources

Information

[Course Flyer](#) (pdf file 91K)
[Syllabus](#) (pdf file 43K -- revised 2/1/06)


Current Use Examples – ePortfolio



**THE UNIVERSITY
of
WISCONSIN
MADISON**

ePortfolio

Alan Wolf



Hometown: Oregon, Wi

Interests: Photography, travel, amphibians and reptiles

- My goals for my time at UW Madison
- Reflecting on my past
- What I'd like to do in my first semester
- How I can work toward First-Year Goals
- Last Question



Future Projects

- ***Useage Metrics***
- ***Course Roster Integration***
- ***Blogging***
- ***PodCasting***
- ***Upgrades to My WebSpace Commons***
 - Adding Group Directories
 - Highlighting listed directories in My WebSpace



Thank you

<http://www.doit.wisc.edu/mywebSPACE>

Cathy Riley
Project Manager
Division of Information Technology
University of Wisconsin-Madison
cathy.riley@doit.wisc.edu